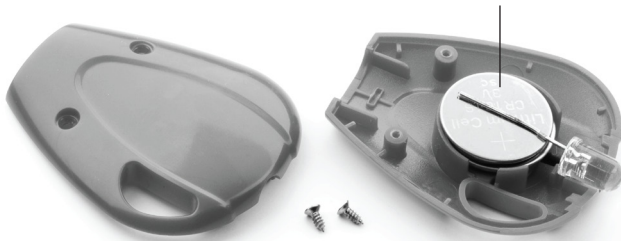


Flashlight Battery Replacement

Two CR1616
batteries,
positive "+" side up.



1. Remove Flashlight from Key Cable.
2. Position Flashlight screws-side-up on a clean, flat surface.
3. Unscrew and save both Phillips screws.
4. Pry open Flashlight case from end opposite LED.
5. Replace old batteries with two new CR1616 3V button cell batteries or equivalent.
6. Position LED/batteries assembly as shown: short-wire-with-sleeve on the bottom, long wire on top, and batteries positive "+" side up between the wires.
7. Replace Flashlight case.
8. Tighten screws gently.

"Made for iPod", "Made for iPhone," and "Made for iPad" mean that an electronic accessory has been designed to connect specifically to iPod, iPhone, or iPad, respectively, and has been certified by the developer to meet Apple performance standards. Apple is not responsible for the operation of this device or its compliance with safety and regulatory standards. Please note that the use of this accessory with iPod, iPhone, or iPad may affect wireless performance.

AirPlay, iPad, iPhone, iPod, iPod classic, iPod nano, and iPod touch are trademarks of Apple Inc., registered in the U.S. and other countries. Lightning is a trademark of Apple Inc.

BATTERY WARNINGS:

This product contains button batteries. **IF SWALLOWED**, batteries could cause severe injury or death in just 2 hours. **SEEK MEDICAL ATTENTION IMMEDIATELY.**

- Always purchase the correct size and grade of battery most suitable for the intended use.
- Clean the battery contacts and also those of the device prior to battery installation.
- Ensure the batteries are installed correctly with regard to polarity (+ and -).
- Remove batteries if they are spent or if product is unused for long periods of time.
- Always replace the whole set of batteries at one time. DO NOT mix old and new.
- DO NOT MIX batteries of different types, such as Alkaline, Standard (carbon-zinc) and/or Rechargeable (nickel-cadmium).
- Do not dispose of batteries in fire.
- Batteries should be recycled or disposed of as per state and local guidelines.

Limited One Year Warranty

This product is covered by a limited one year warranty to the original purchaser in that this product is free from defects in workmanship and materials. During the warranty period, these products will either be repaired or replaced with a product of equal or greater value, excluding any custom engraving or printing.

Damage through normal wear and tear (including battery expiration and surface coatings), repair or alteration, misuse, abuse, neglect, accident, improper storage and handling, fire, negligence, improper cleaning, circumstances not directly attributable to manufacturing defects, or act of God is not included.

THIS WARRANTY IS IN LIEU OF ALL OTHER WARRANTIES, EXPRESS OR IMPLIED, INCLUDING BUT NOT LIMITED TO, IMPLIED WARRANTY OF MERCHANTABILITY OR FITNESS FOR A PARTICULAR USE.

This warranty gives you specific legal rights, and you may also have other rights which vary from state to state. Simply return your SWISS+TECH® brand product postpaid and insured to:

Swiss+Tech Products, 30725 Solon Industrial Pkwy, Solon, OH 44139 USA