

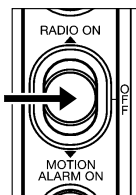
## USE & CARE INSTRUCTIONS

BodyGard  
**Survivor™**

12-in-1  
Self-Powered Emergency Companion

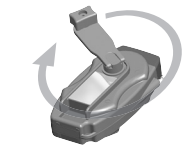


SWISS+TECH®



### CHARGE BEFORE USE

In order to operate your BodyGard Survivor™, the unit must be charged. Before charging, make sure that the three-position slide switch on the side of the unit is in the middle, or OFF position. To charge unit, turn the hand crank on the back of the unit or use an optional A/C Adaptor. For more detailed instructions, please refer to the **A/C Input (#7)** and **Self-Charging Hand Crank (#10)** sections below.



Crank handle flips out for easy recharging anywhere, anytime.

- Telescoping Antenna
- Easy-to-Read LCD Display
- Automatic Reset Button
- Volume Down Button
- Automatic Scan Button
- Volume Up Button

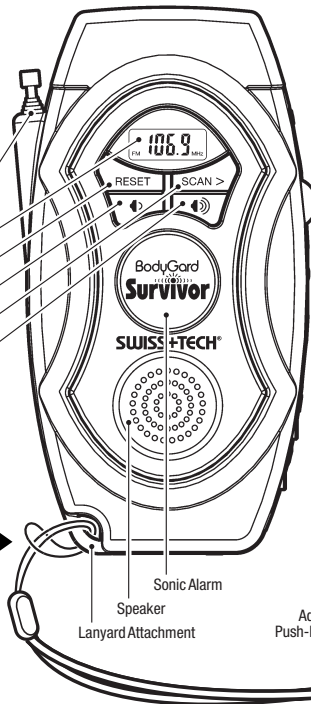
### ATTACH LANYARD BEFORE USE

To attach the lanyard to the BodyGard Survivor™, insert the small loop of the lanyard through the post on the bottom corner of the unit. Next, insert the lanyard strap through the small loop. Tighten the loop to secure the lanyard to the unit. Use the push-button collar to adjust lanyard size to secure the unit to your wrist, doorknob, backpack or other object.

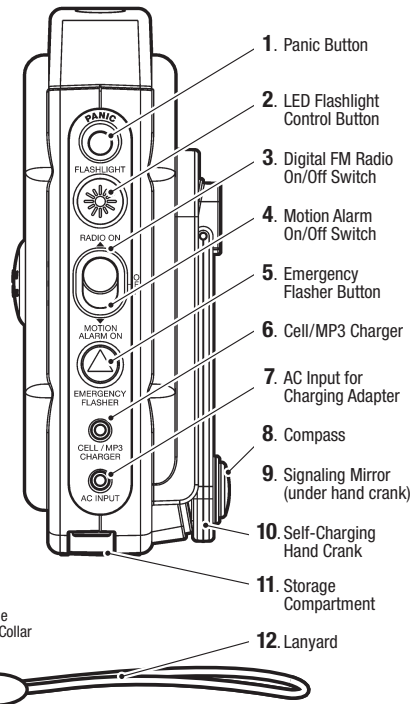
### RATTLE SOUND

A component of the **Motion Sensor** may make a jiggling sound with vigorous movement. Do not be concerned as this is normal.

### FRONT VIEW



### SIDE VIEW



1. Panic Button
2. LED Flashlight Control Button
3. Digital FM Radio On/Off Switch
4. Motion Alarm On/Off Switch
5. Emergency Flasher Button
6. Cell/MP3 Charger
7. AC Input for Charging Adapter
8. Compass
9. Signaling Mirror (under hand crank)
10. Self-Charging Hand Crank
11. Storage Compartment
12. Lanyard

- The Radio LCD display has a backlight feature that will automatically activate when the radio is turned on. The backlight feature will automatically turn off after 10 seconds if no radio buttons are pressed.
- To turn off the RADIO, move the three-position slide switch to the middle, or "OFF" position.

**NOTES:** (1) All of the other features remain functional while the radio is on. (2) Be sure the speaker on the front is not obstructed when using the radio. (3) For best sound, stand device upright.

**FCC COMPLIANCE:** This device complies with Part 15 of the FCC Rules. Operation is subject to the following two conditions: (1) This device may not cause harmful interference, and (2) this device must accept any interference that may cause undesired operation. The frequency ranges are as follows: FM 87.5 – 108.5.

### 4. MOTION ALARM

- Using the attached lanyard, hang device on door knob with the speaker facing outward.
- Locate the three-position slide switch on the side with the words "MOTION ALARM ON" below it.
- Move the switch to the "MOTION ALARM ON" position to activate motion sensor.
- Motion will cause the device to trigger the audio alarm and red emergency flashers.
- To turn off the MOTION ALARM, move the three position slide switch to the middle, or OFF position.

**NOTES:** (1) The Motion Alarm is programmed with a ten second delay to allow time to stop movement of the device and prohibit inadvertent activation of the alarm. (2) The alarm and emergency flashers will be activated for a minimum of 5 minutes before resetting. (3) All other features are deactivated when the Motion Alarm is activated.

### 5. EMERGENCY FLASHER

- Locate the recessed button on the side with the recessed triangle symbol (▲) and words "EMERGENCY FLASHER" below it.
- Press to activate the red Emergency Flasher.
- Press again to turn off.

**NOTES:** (1) The two red LEDs will flash 3 times per second. (2) All other features will remain active while emergency flashers are on.

### 6. CELL/MP3 CHARGER

- Locate the Output Jack on the side with the words "CELL/MP3 CHARGER" below it.
- To charge a cell phone, MP3 Player, or other device, plug one end of the cable (not included) into the CELL/MP3 CHARGER Output Jack and the other end into the device to be charged (Cell Phone, MP3 Player, etc.).
- To charge, wind the Handle in either direction.

### 7. A/C INPUT

- Locate the Input Jack on the side with the words "A/C INPUT" below it.
- To use an A/C Adaptor, plug one end into the A/C INPUT Jack and the other end to a domestic power source.
- The device can be used while charging.

**NOTES:** The BODYGARD SURVIVOR™ comes equipped with a 300mAh internal Lithium Ion battery. Charging times will vary depending on the output current of the optional A/C Adapter charger. For example, a 300mA charger will fully charge in approximately 1 hour. Higher output currents (e.g. 450mA) will charge faster.

**CAUTION:** To avoid damage to the device, the A/C Adapter Charger should not exceed the following specifications: Voltage Output — 5.0V (DC output) Current Output — less than 1,000mA.

### 8. COMPASS

- Locate the COMPASS on the back Handle.
- For best results, move Hand Crank at a 90° angle from the body of the BODYGARD SURVIVOR™ before reading the COMPASS.
- Hold your BODYGARD SURVIVOR™ absolutely level, or place on a flat, level surface.
- Locate a distant visual target in the direction you want to go.
- Check your compass regularly to confirm that you are continuing in the right direction.

**CAUTION:** Avoid using near large metal objects or electronic devices. These may cause interference with the compass readings.

### 9. SIGNALING MIRROR

- Lift the Hand Crank Handle on the back to access the SIGNALING MIRROR.
- Hold the mirror at eye level (with mirror facing out) and look over the top of the mirror.
- Outstretch your other arm and form a V with two fingers.
- Sight over the top of the mirror with the mirror reflection visible on the V.
- Carefully turn and tilt the mirror to move the V and the reflection to the target.
- Lower the V so that the reflection touches only the tip of the fingers for maximum signaling performance.

**CAUTION:** The bright light reflecting from the signaling mirror can be blinding and could cause an accident if flashed inappropriately. Practice by aiming only at inanimate objects.

**NOTES:** (1) It is better to practice with the Signaling Mirror before you need to use it. This is more important when you might have to use it in an emergency.

(2) For daylight use only. If there is no sun, the Signaling Mirror does not work. It signals by reflecting sunlight.

### 10. SELF-CHARGING HAND CRANK

- Lift the Hand Crank Handle on the back of your BODYGARD SURVIVOR™.
- To charge, wind the Handle in either direction.
- For optimal charge, wind the Hand Crank up to 120-150 RPM (2 to 2.5 turns per second).
- 3 minutes of Hand Cranking delivers approximately:
  - 60 minutes of Flashlight use
  - 50 minutes of Emergency Flasher use
  - 10 minutes of FM Radio use
  - 20 minutes of Security Alarm siren
  - 5 minutes of Cell Phone talk time
- A fully charged battery will deliver up to:
  - 45 hours of Flashlight use
  - 24 hours of Emergency Flasher use
  - 2 hours of FM Radio use
  - 2.5 hours of Security Alarm siren

**NOTES:** (1) Rated battery life should be used as a guide and never be taken literally. (2) Actual battery life may vary based on usage patterns, environmental conditions and winding speed. (3) If the Panic Alarm, Flashlight or Emergency Flasher goes on when generating power, these buttons should be pressed to the off position.

### 11. STORAGE COMPARTMENT

- Locate the storage compartment that is built into the bottom of your BODYGARD SURVIVOR™.
- Lift the door on the side opposite of the lanyard to access the storage compartment.
- Place small objects in storage compartment and secure by closing the door.

### 1. PANIC BUTTON

- Locate the recessed button on the side with the word "PANIC" above it.
- Press once to activate the alarm.
- Press AND HOLD for 2 Seconds to turn off the alarm.**

**CAUTION:** Device emits loud noise to aid in warding off attackers. DO NOT place near ears.

**NOTES:** (1) The Emergency Flasher is also activated when the PANIC button is pressed, (2) The Flashlight remains functional while the Panic Button is sounding, (3) Be sure the speaker on the front is not obstructed when sounding the panic alarm.

### 2. LED FLASHLIGHT

- Locate the protruding button on the side with the lamp symbol (☼) and the word "FLASHLIGHT" above it.
- Press 1 time to turn on all three LEDs.
- Press 2nd time to turn on the center LED only.
- Press again to turn off.

### 3. DIGITAL FM RADIO

- Locate the three-position slide switch on the side with the words "RADIO ON" above it.
- Move the switch to the RADIO ON position to turn on the radio.
- To ensure best reception, fully extend antenna.
- Locate the "SCAN >" button on the front panel. Press the SCAN > button to move to the next highest frequency signal.
- Locate the "RESET" button on the front panel. Press the RESET button to move back to the lowest frequency.
- Locate the Volume Down (◀) and Volume Up (▶) buttons on the front panel. Press the appropriate button to adjust the volume.

### 12. LANYARD

- Attach the lanyard to the BodyGard Survivor™ by inserting the small loop of the lanyard through the post on the bottom corner of the unit.
- Next, insert the lanyard strap through the small loop. Tighten the loop to secure the lanyard to the unit.
- Use the push-button collar to adjust lanyard size to secure the unit to your wrist, doorknob, backpack or other object.

### Limited One Year Warranty

This product is covered by a limited one year warranty to the original purchaser in that this product is free from defects in workmanship and materials. During the warranty period, this product will either be repaired or replaced with a product of equal or greater value.

Damage through normal wear and tear (including battery expiration and surface coatings), repair or alteration, misuse, abuse, neglect, accident, improper storage and handling, fire, negligence, improper cleaning, circumstances not directly attributable to manufacturing defects, or act of God is not included.

THIS WARRANTY IS IN LIEU OF ALL OTHER WARRANTIES, EXPRESS OR IMPLIED, INCLUDING BUT NOT LIMITED TO, IMPLIED WARRANTY OF MERCHANTABILITY OR FITNESS FOR A PARTICULAR ISSUE.

This warranty gives you specific legal rights, and you may also have other rights which vary from state to state. Simply return your SWISS+TECH® brand product postpaid and insured to: Swiss+Tech Products 701 Beta Drive, Unit 5 Cleveland, OH 44143

### www.swisstechtools.com

Made in China. Patents Pending. SWISS+TECH® is a registered trademark, and BODYGARD SURVIVOR™ is a trademark of Crestwood Partners, LLC. Specifications are subject to change without notice. ©2008 Crestwood Partners, LLC, Cleveland, OH 44143 1-800-414-8799

#74024 Rev. B